

WELCOME TO PIRAÍ DO SUL

www.piraidosul.pr.gov.br

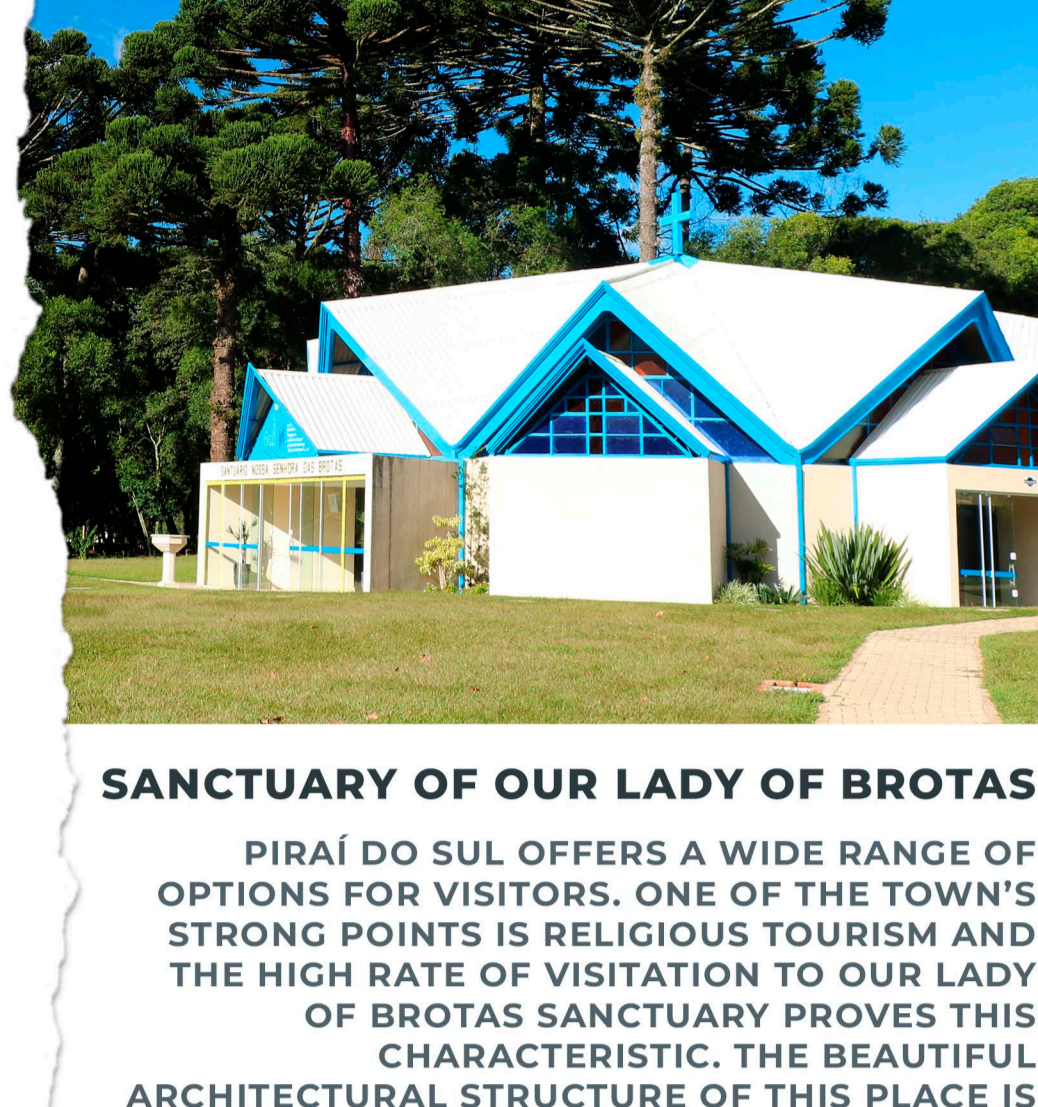


Pirai do Sul



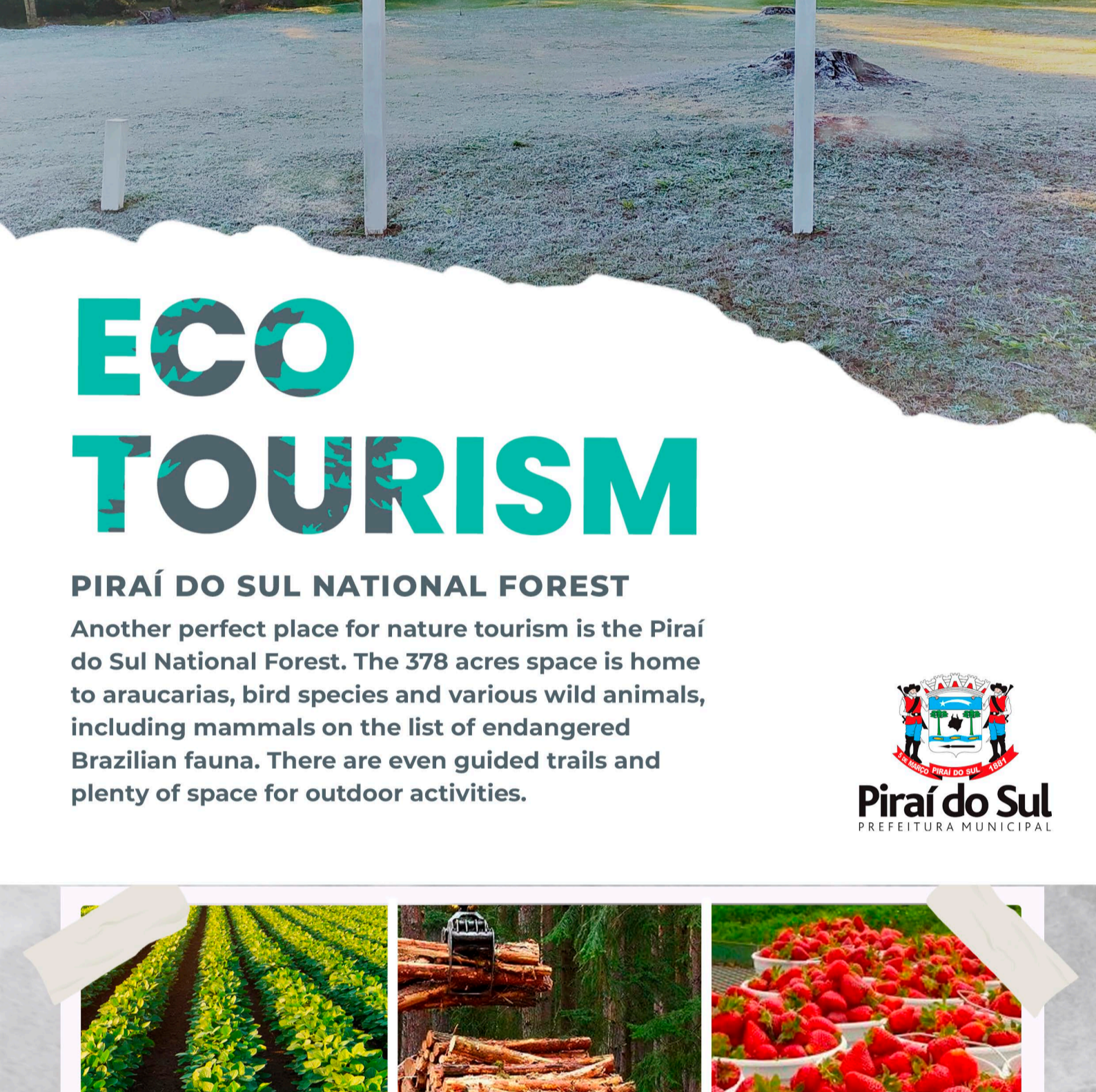
RELIGIOUS TOURISM

SANCTUARY OF OUR LADY OF BROTAS



SANCTUARY OF OUR LADY OF BROTAS

PIRAÍ DO SUL OFFERS A WIDE RANGE OF OPTIONS FOR VISITORS. ONE OF THE TOWN'S STRONG POINTS IS RELIGIOUS TOURISM AND THE HIGH RATE OF VISITATION TO OUR LADY OF BROTAS SANCTUARY PROVES THIS CHARACTERISTIC. THE BEAUTIFUL ARCHITECTURAL STRUCTURE OF THIS PLACE IS LOCATED IN A PLEASANT FOREST SURROUNDED BY ARAUCARIA TREES, NATIVE TREES AND STREAMS. HUNDREDS OF BELIEVERS VISIT THE SANCTUARY OF THE PATRON SAINT EVERY YEAR.



ECO TOURISM

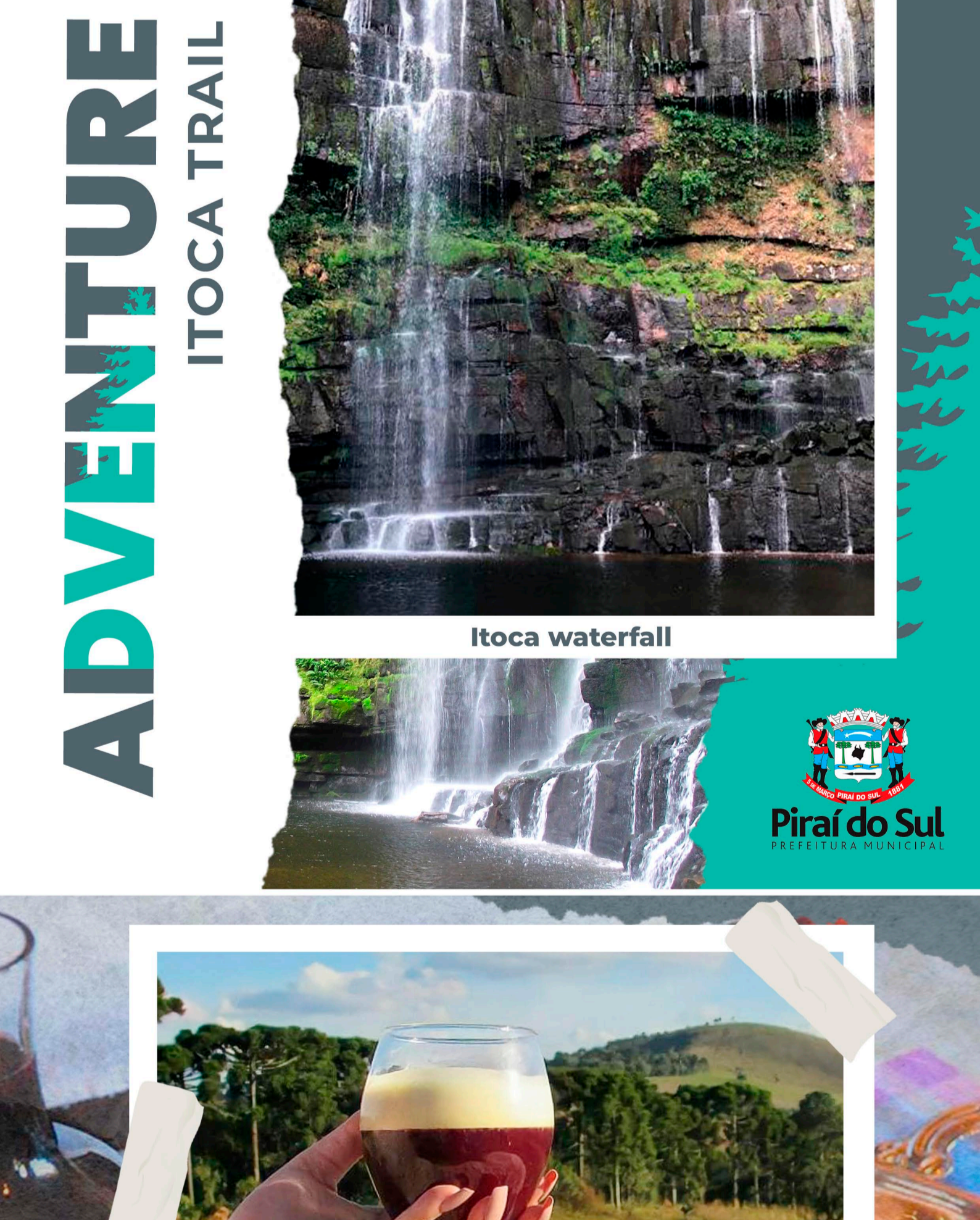
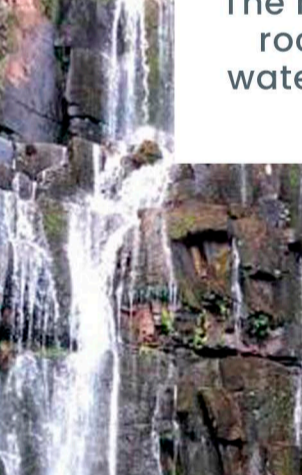
PIRAÍ DO SUL NATIONAL FOREST

Another perfect place for nature tourism is the Pirai do Sul National Forest. The 378 acres space is home to araucarias, bird species and various wild animals, including mammals on the list of endangered Brazilian fauna. There are even guided trails and plenty of space for outdoor activities.



BUSINESS TOURISM

One of the characteristics of the municipality is the diversity in rural properties. An example of this is that Pirai do Sul stands out in the production of wood and vegetables among the municipalities belonging to the Rural Economy Department (Deral). Pirai do Sul concentrates, for example, the production of arracacha in the region: with 1235 acres destined for cultivation in 2020, the municipality harvested more than six thousand tons of food. Another highlight is the production of strawberries: in this aspect, Pirai do Sul is the fifth largest producer in the state: in 2020, 210 acres were destined for the cultivation of fruit, with production that reached more than 3 thousand tons. In recent years, the municipality has also increased its volume of exports, recording a surplus in its trade balance. The balance increased from US\$ 5.71 million in 2011 to US\$ 32.3 million in 2019, with an emphasis on the export of kraft paper and soy.



A hiking activity done in rocky and steep terrain of the Protected Area Devonian environment, with a good dose of adventure and beautiful landscapes. The route goes through cave paintings, rock formations, views of the canyon, water courses, beautiful waterfalls and forested fields and woodland.

Itoca waterfall



TYPICAL DRINK

CABRIÚVA

The name Cabriúva was given due to its reddish color, which resembled a tea made by the Indigenous people from the Cabreúva tree wood, for medicinal use. The drink is basically composed of heated dry red wine and egg nog. It is appreciated on cold days, both on religious parties and on June and July parties held in Pirai do Sul.



INVEST IN PIRAÍ DO SUL THE PROGRESS STARTS HERE!

